



---

# THE REDMOND RECORDER

REDMOND HISTORICAL SOCIETY NEWSLETTER  
JUNE • VOL. 21 • NO. 6

---

Every town has a history. Discover ours.

---

## ‘SPEAKEASY’ FUNDRAISER A SMASHING SUCCESS!



**Jo Ann and Dale Potter at the  
‘Speakeasy’ fundraiser on May 11.  
Photo: Cheryl Magnuson**

A great time was had by all at the Society's 2nd annual fundraiser auction and dinner. See p. 4.

- President John Oftebro revisits Redmond trivia, p. 3.
- Tom Hitzroth looks at Luke McRedmond's homestead, p. 6.
- Visit the Society this summer, p. 8.

# 2019

## BOARD OF DIRECTORS

### OFFICERS

John Oftebro • President  
Margy Rockenbeck • Senior Vice President  
Indira Krishnaswami • Vice President Finance  
Rachel Davis • Vice President Collections  
Deborah Oftebro • Secretary

### DIRECTORS AT LARGE

Ed "Dint" O'Brien  
ChuNi Kao  
Judith Simpson  
Brian Burck  
Paige Norman

### ADMINISTRATIVE & COLLECTIONS MANAGER

Halee P. Turner

### ATTORNEY • Charles Diesen

Our finances are public record and may be viewed at the office.

### FREE NEWSLETTER

If you don't subscribe, please sign up.  
Call the office at **425.885.2919** or email  
**[info@redmondhistoricalsociety.org](mailto:info@redmondhistoricalsociety.org)**.  
State your preference of email or U.S. Mail.  
The historical society prefers email as it's  
inexpensive and photos are enhanced online.

### FIND US ON FACEBOOK:

**[facebook.com/Redmond.Historical.Society](https://www.facebook.com/Redmond.Historical.Society)**

### THE REDMOND RECORDER

is published nine times annually.

### NEWSLETTER EDITOR

Laura Lee Bennett

PHONE 425.885.2919

ADDRESS Vision 5 Building  
8525-163rd Court NE #120  
Redmond, WA 98052

WEBSITE [redmondhistoricalsociety.org](http://redmondhistoricalsociety.org)

EMAIL [info@redmondhistoricalsociety.org](mailto:info@redmondhistoricalsociety.org)

HOURS Monday, Tuesday,  
and Wednesday:  
9:30 a.m. to 4:30 p.m.

## SOCIETY NEWS

We had a wonderful time at the "Speakeasy" Fundraiser on May 11. See story on p. 4.



Gene and Cheryl Magnuson



**Sotheby's**  
INTERNATIONAL REALTY

### Society Partners with Sotheby's International Realty

Marketplace Sotheby's International Realty brokers **Cynthia Olsen** and **Mary Sullivan** have formed a unique partnership with the Redmond Historical Society in an effort to help raise money for the Society. Sotheby's International Realty will give 10% of commissions to support the Redmond Historical Society when you or someone you refer is looking to buy or sell property. Ask Cynthia Olsen, Mary Sullivan, or the Society for details. Marketplace Sotheby's International Realty established this program as a way to give back to organizations that are committed to the welfare of our communities. For more information, contact Cynthia Olsen at [cynthia.olsen@sothebysrealty.com](mailto:cynthia.olsen@sothebysrealty.com), 425.877.9904, Mary Sullivan at [mary.sullivan@sothebysrealty.com](mailto:mary.sullivan@sothebysrealty.com), 425.449.2841, or call the Society Office at 425.885.2919.



## REDMOND TRIVIA REVISITED

By John Oftebro

Redmond Historical Society members should all know some basic history facts. Test your knowledge. Then learn lots more by spending time on our website and test your neighbors.

1. Early Redmond inhabitants were Native Americans from the tribe known as \_\_\_\_\_.
2. The Luke McRedmond and \_\_\_\_\_ families were regarded as the two families responsible for settling Redmond.
3. An earlier name for Redmond was \_\_\_\_\_.
4. The Sammamish River level dropped approximately \_\_\_\_\_ feet in 1916 when Lake Washington was lowered to build the ship canal.
5. The Tosh family farm that became Marymoor Park was first named \_\_\_\_\_ by James Clise.
6. Wm. H. White, an early prominent citizen, and was appointed as \_\_\_\_\_.
7. He married Emma McRedmond and in 1900 built the \_\_\_\_\_.
8. Redmond's first school was built in \_\_\_\_\_.
9. \_\_\_\_\_ was the first industry in Redmond.
10. The second major industry was farming, and there were at one time over \_\_\_\_\_ poultry farms in the Redmond area.
11. Redmond's first library was founded by the \_\_\_\_\_ women's club.
12. The Sammamish Slough was known for \_\_\_\_\_ from 1933 to 1976.
13. Bill Brown was Redmond's second mayor and served for \_\_\_\_ years. His saloon was in his building today occupied by the Matador.
14. The area where City Hall and the Redmond Library are today was once \_\_\_\_\_.
15. Redmond Town Center covers an area that was once a \_\_\_\_\_.

Answers: 1. Squak 2. Perrigo 3. Melrose 4. Nine 5. Willowmoor 6. Washington Supreme Court Justice 7. Justice White House 8. 1875 9. Logging 10. 100 11. Nokomis 12. Boat racing 13. 30 14. Lampaert's cattle ranch 15. Golf course

Congratulations! Answering the majority of these qualifies you as a Redmond Historian!

# 'IT WAS THE BEE'S KNEES!'

Thank you to EVERYONE who attended the 2<sup>nd</sup> Annual Auction & Fundraiser on Saturday, May 11<sup>th</sup> at the Redmond Senior Center. I hope you had a great time—I sure did!

Nearly 100 members and guests attended the event, with a catered buffet and appetizers provided by **Off the Vine Caterers**. Our Dessert Dash table was glamorously delicious; with desserts donated by members, community, and businesses from all around Redmond and decorated by **Andromeda Event Planner and Decorations**. Our guest speaker, Christine Himes, wowed the crowd with her remembrances about Redmond and her life as the first full-time female Mayor of Redmond.

We had fabulous trips to Mexico and the Caribbean, Italian Dinners, Walking Tours, artwork, wine-tastings, museum passes, and even tickets to Mariners, Husky, at Seattle Storm games!

Our volunteers outdid themselves with obtaining donations, event setup, take-down and working throughout the event to ensure everything went smoothly! A huge thank you to Deborah Oftebro, Laura Lee Bennett, Patsy Rosenbach, Ed O'Brien, Sally Eberhardt, John Gustaveson, Russ Norman, Tom Hansen, Tom Hitzroth, Teresa Potter/Urban Dakota Creative, Halee Turner, Rachel Davis, Indira Krishnaswami, ChuNi Kao, Tu-Ha Nguyen, Tony Dondero, and Dean Jowers.



**Auctioneer Dale Fiske**



**Membership Co-Chairs  
John Oftebro and Paige Norman**

And, finally, thanks to our newest members of the Society! **Lifetime Members** John & Jay Cogan, and Peggy Garbarino; **Homestead Members** Chuck & Cynthia Telford, Jim & Faye Kerrigan; and **Pioneer Members** R.S. Ottavelli, Lucia Lucarelli, Yvonne Lampaert Garrity, and Anne St. Germain.

Memberships make great gifts—share your passion for history and Redmond with gifting a membership to the Redmond Historical Society!

Paige Norman,  
Auction Co-Chair,

Membership Committee

Sources: <http://bit.ly/2Q6NmyI>



## ACKNOWLEDGEMENTS

Getting Eventive, Cashiering  
Dale Fiske, DLF Auctions  
Redmond Senior Center  
The City of Redmond, Washington  
Redmond Police Department  
Teresa Potter/Urban Dakota Creative  
Hot Off the Press Printers  
Sweet Buffet Lady  
Judy Aries Lang

Laura Lee Bennett  
Redmond Historical Society  
Off the Vine Catering  
Faith Lutheran School  
Andromeda Event Planner  
and Decorations  
Patsy Rosenbach, Photographer  
Deborah Oftebro  
Cheryl Magnuson, Photographer

## SPONSORS

### Diamond (\$5,000)

Microsoft

### Gold (\$1,000)

John & Deborah Oftebro

### Silver Plus (\$600)

T.J. & ChuNi Kao

### Friend of the Society (\$250)

Angela Birney

### Table Sponsors

Judy Aries Lang

T.J. & ChuNi Kao

John & Deborah Oftebro

All our Sponsors, Donors, Volunteers, Members, and Guests –Thank You!

# LUKE McREDMOND'S HOMESTEAD

**By Tom Hitzroth**

Anyone who has stood in front of the Old Redmond Schoolhouse and looked across NE 80<sup>th</sup> Street was looking at the homestead of **Luke McRedmond**. The homestead was located between 164<sup>th</sup> Ave NE and 168<sup>th</sup> Ave NE, and from NE 80<sup>th</sup> Street to about where the Bear Creek channel is today.

McRedmond originally filed his claim on July 7, 1871, and for unknown reasons cancelled it on July 12, 1871. He was the fourth claimant to land in the area, having been preceded by **David Mayhew** on May 1, 1871, **Warren Perrigo** on June 14, 1871, and **Olof Engblom** on June 29, 1871. On April 14, 1872, McRedmond returned to the same location and on February 14, 1874, again filed for a

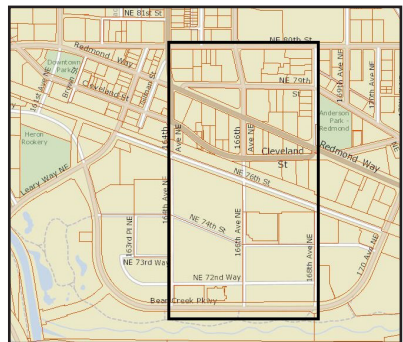
homestead. Under the Homestead Act of 1862, Luke had five years to make improvements and then two years to file for the patent or title to the land.

An 1879 record shows he had 30 acres under cultivation, harvested 9 tons of hay, had 2 oxen, 16 cows, 3 calves, 11 pigs, 18 chickens, produced 100 eggs, churned 400 pounds of butter, and harvested 60 bushels of wheat.

On January 8, 1881, McRedmond filed proof of his claim at the Olympia Land Office. One of the two witnesses to his claim was **Ira Woodin** of Woodinville. He received the patent or deed on July 20, 1881. This was the beginning of more land acquisitions in Redmond by the city's namesake over the next 11 years.



**McRedmond Family**  
**Redmond Post Office, ca. 1886.**  
**Source: Eastside Heritage Center.**



**Luke McRedmond's claim.**  
**Source: Author's rendering.**



## SOCIETY ANNOUNCES WALKING TOUR OF PIONEER CEMETERY By Halee Turner

Join us on Sunday, July 21st for a Walking Tour of the Redmond Pioneer Cemetery in partnership with the Cedar Lawns Memorial Park & Funeral Home.

Local historian **Tom Hitzroth** will explore the lives of a number of interesting figures from Redmond's past, whose final resting places are located within the cemetery, including members of the **Adair, Tosh, Perrigo, and Sikes** families.

He will also compare and contrast elements of cemetery design, and discuss the symbolic meanings behind a wide variety of monuments.

The tour will begin promptly at 1:00 PM at the flag pole inside the Redmond Pioneer Cemetery, located across from the Cedar Lawns Memorial Park at 7200 180th Ave NE, Redmond, WA. Light refreshments will be provided, courtesy of Cedar Lawns.

To not interfere with the accessibility of the Memorial Park, please find parking in the surrounding area or on the



**Tom Hitzroth**

gravel road in the Pioneer Cemetery. If parking on the gravel road, please be aware that you will be unable to leave until the cars in front of you have exited the cemetery.

We suggest a donation of \$10 per person for this tour. Registration is required in advance, and space is limited. For more information or to reserve your spot, call the office at 425-885-2919 or visit [RedmondHistoricalSociety.org](http://RedmondHistoricalSociety.org).



**Headstones for the Adams Family.**

Source: Redmond Historical Society Archives

# JOIN THE SOCIETY FOR SUMMER FUN!

By Laura Lee Bennett

Thank you for joining us at the Society's speaker programs and fundraiser events. The 2019–2020 season of the Saturday Speaker Series will launch in September, as well as our Evening Speaker Series at the Redmond Library. (Stay tuned for a new speaker schedule, published in August.)

Meanwhile, look for us at one of the following events in Redmond. Better still, consider volunteering to staff our booth at the Saturday Market, or march with us in the Redmond Derby Days parade. Contact our office, [info@redmondhistoricalsociety.org](mailto:info@redmondhistoricalsociety.org), or call 425-885-2919. Our office hours are M-W, 9:30-4:30.

Have a great summer!



**Redmond Saturday Market,**  
<http://redmondsaturdaymarket.org/>  
7730 Leary Way, July–October

We'll be at the Market on:

Saturday, July 6  
Saturday, August 3  
Saturday, September 7  
Saturday, October 5



**Redmond Derby Days,**  
<https://www.redmond.gov/1138/Derby-Days>  
City Hall Campus, Saturday, July 13

This annual city-wide festival brings out the crowds with bicycle races, parades, food, music, and more.

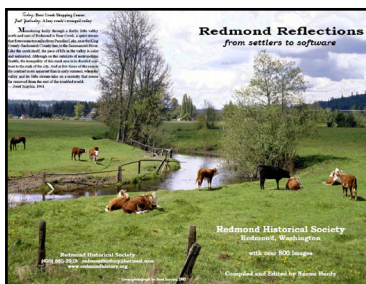


**Poets in the Park,**  
<http://www.graceguts.com/poets-in-the-park>  
Anderson Park, Saturday, July 20, 11 am–6 pm

Free all-day festival of poetry readings, workshops, hula hoops, and ice cream! Look for our display in the bookfair.



**ORDER  
Now**



## REDMOND REFLECTIONS BOOK

**\$15** (INCLUDES TAX)\*

**SHIPPING & HANDLING:** Please add \$10.00 shipping & handling surcharge for any order that you would like mailed.

### ORDERING INFO\*:

NAME \_\_\_\_\_ PHONE NUMBER \_\_\_\_\_  
# OF BOOKS ORDERED \_\_\_\_\_ AMOUNT ENCLOSED (CHECK PLEASE) \$ \_\_\_\_\_

### SHIPPING INFO:

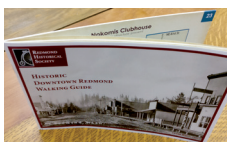
NAME \_\_\_\_\_  
STREET ADDRESS \_\_\_\_\_  
CITY • STATE • ZIP \_\_\_\_\_

**NOTE:** REDMOND REFLECTIONS is also available at the Redmond Historical Society Office at the Vision 5 Building 8525-163rd Court NE #120 Redmond, WA 98052. (Hours of operation on page 2.)

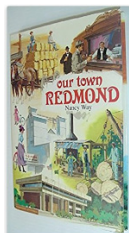
## GREAT GIFT IDEAS FOR HISTORY LOVERS

Need something special for someone who appreciates our history?  
These are available at our Society office:

### BOOKS



**HISTORIC DOWNTOWN  
REDMOND WALKING GUIDE**  
The Redmond Historical Society's updated *Historic Downtown Walking Guide*. Suggested donation is \$8.



**OUR TOWN, REDMOND**  
History of Redmond  
by Nancy Way.  
\$12 (includes tax)

### POSTCARDS

of historical photos

### MAGNETS

featuring artwork  
by Patti Simpson Ward



This painting of Marymoor Park, *Flying Kites at the Clise Mansion*, is the work of fine artist Patti Simpson Ward.

Visit her website to see more images of Eastside settings— [pattisimpsonward.com](http://pattisimpsonward.com).

# EVENING SPEAKER SERIES UPDATE

On April 22, over 70 people attended the Society's second program of the Evening Speaker Series at the Redmond Library. Administrative and Collections Manager **Halee Turner** gave a lively, informative presentation about the link between cats and maritime history. Our next Evening Speaker program at the library will be 7 pm on October 7, 2019, with **Paul Dorpat and Jean Sherrard**, talking about their new book, *Seattle Now & Then: The Historic Hundred*.

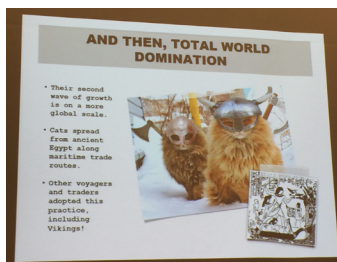


Photo: Paige Norman

## OUR SOCIETY LIFETIME MEMBERS

**Sharon Freeman, Ballisty**  
**Louise Graep Barnes**  
**David Best**  
**John and Jay Cogan**  
**Marjorie Costello**  
**John Couch**  
**Cory de Jong**  
**Betty L. Emmanuel**  
**Tony Emmanuel**  
**Don and Mary Fowler**  
**Frank Garbarino**  
**Peggy Garbarino**  
**Madeleine Roberts Hagen**  
**Suzanne Hall**  
**Wayne Hansen**  
**Mary Hanson**  
**Jerry Hardy**  
**Chris Himes**  
**Rosemarie Ives**

**Patricia Weiss Jovag**  
**Barbara Weiss Joyce**  
**Allen Lang**  
**Judy Aries Lang**  
**Judith M. Lankford**  
**Miguel Angel Llanos**  
**Jon M. Magnussen**  
**Dorothy Matsui**  
**Diana Morelli**  
**Panfilo Morelli**  
**Allison Reed Morris**  
**Edward O'Brien**  
**Deborah Oftebro**  
**John Oftebro**  
**Dale Potter**  
**Jo Ann Potter**  
**Bobbie Graep Rettig**  
**Dave Rockenbeck**  
**Laurie M. Rockenbeck**

**Margy U. Rockenbeck**  
**William Rockenbeck**  
**Doris Bauer Schaible**  
**Dick Shinstrom**  
**Frederick Springsteel**  
**Beryl Standley**  
**John C. Stilin**  
**Sherry B. Stilin**  
**Fred Stray**  
**Larry O. Sundholm**  
**Subhadra Terhanian**  
**Doris Townsend**  
**Joe Townsend**  
**Roger Trepanier**  
**Arlyn Bjerke Vallene**  
**Patti Simpson Ward**  
**Donald Glennister Watts**  
**Joanne Westlund**  
**James Windle**

A full listing of lifetime members, both current and in memoriam, is available at [redmondhistoricalsociety.org](http://redmondhistoricalsociety.org)



## JOIN REDMOND HISTORICAL SOCIETY

Every town has a history. Discover ours.

**CONSIDER A GIFT MEMBERSHIP FOR A FAVORITE HISTORY BUFF.**

### LEVELS OF MEMBERSHIP (Check one only.)

- \$5.00** \_\_\_\_\_ TRAILBLAZER (Student)  
**\$25.00** \_\_\_\_\_ PIONEER (Individual)  
**\$40.00** \_\_\_\_\_ HOMESTEADER (Family)  
**\$200.00** \_\_\_\_\_ ENTREPRENEUR (Supporter)  
**\$250.00** \_\_\_\_\_ CORPORATE (Business)  
**\$1,000.00** \_\_\_\_\_ HISTORY MAKER (Lifetime)

**ALL CONTRIBUTIONS ARE TAX DEDUCTIBLE.**

**PLEASE MAKE CHECKS PAYABLE TO: REDMOND HISTORICAL SOCIETY**

Fill out the form below, cut out and mail with your check to:

**Redmond Historical Society**  
**Attn: Membership**  
**Vision 5 Building**  
**8525-163rd Court NE #120**  
**Redmond, WA 98052**

**RENEW  
Now!**

**MEMBERSHIP INFORMATION** • Application effective for year: 2019

Membership Names: 1) \_\_\_\_\_ 2) \_\_\_\_\_

Address: \_\_\_\_\_ Unit# \_\_\_\_\_

City: \_\_\_\_\_ State: \_\_\_\_\_ Zip: \_\_\_\_\_

Phone: \_\_\_\_\_ Email: \_\_\_\_\_

☐ Address Change

☐ New Member

☐ Renewal

Newsletter Delivery Preferences

☐ New to Redmond

☐ I would like to volunteer

☐ Email

☐ US Mail

How did you hear about the Redmond Historical Society? \_\_\_\_\_



## REDMOND HISTORICAL SOCIETY

Vision 5 Building

8525-163rd Court NE #120

Redmond, WA 98052

## MAJOR SPONSORS



City of Redmond



CULTURE



THE BELLEVUE  
COLLECTION™

BELLEVUE SQUARE  
LINCOLN SQUARE BELLEVUE PLACE

